



Noise Monitoring Result

Day Time (0700 - 1900hrs on normal weekdays)

Location: M1a - Harbour Road Sports Centre

Date	Time	Weather	Measurement Noise Level			Baseline Level	Construction Noise Level	Limit Level
			Leq	L10	L90	Leq	Leq	Leq
Unit: dB(A), (30-min)								
03/07/13	9:10	Fine	74.0	76.5	69.0	72	69	75
09/07/13	9:00	Fine	73.9	76.5	68.5	72	69	75
17/07/13	10:10	Fine	72.7	75.5	67.0	72	63	75
23/07/13	11:10	Fine	72.4	75.4	67.0	72	59	75

Location: M2b - Noon-day gun area

Date	Time	Weather	Measurement Noise Level			Baseline Level	Construction Noise Level	Limit Level
			Leq	L10	L90	Leq	Leq	Leq
Unit: dB(A), (30-min)								
03/07/13	10:00	Fine	71.4	72.5	69.5	68	69	75
09/07/13	9:50	Fine	70.2	71.0	68.5	68	67	75
17/07/13	11:00	Fine	71.6	72.5	68.5	68	69	75
23/07/13	13:00	Cloudy	75.1	76.5	72.5	68	74	75

Location: M3a - Tung Lo Wan Fire Station

Date	Time	Weather	Measurement Noise Level			Baseline Level	Construction Noise Level	Limit Level
			Leq	L10	L90	Leq	Leq	Leq
Unit: dB(A), (30-min)								
03/07/13	10:45	Fine	69.7	76.0	66.0	69	62	75
09/07/13	10:30	Fine	66.3	68.0	64.0	69	66	75
17/07/13	13:00	Fine	66.9	67.5	63.5	69	67	75
23/07/13	13:50	Cloudy	66.2	68.0	63.5	69	66	75

Location: M4b - Victoria Centre

Date	Time	Weather	Measurement Noise Level			Baseline Noise Level	Construction Noise Level	Limit Level
			Leq	L10	L90	Leq	Leq	Leq
Unit: dB(A), (30min)								
03/07/13	11:25	Fine	70.0	71.5	68.5	67	67	75
09/07/13	11:15	Fine	70.9	72.0	68.5	67	68	75
17/07/13	13:45	Fine	70.8	71.5	69.0	67	68	75
23/07/13	14:45	Fine	70.7	72.0	69.0	67	68	75

Location: M5b - City Garden

Date	Time	Weather	Measurement Noise Level			Baseline Level	Construction Noise Level	Limit Level
			Leq	L10	L90	Leq	Leq	Leq
Unit: dB(A), (30min)								
03/07/13	13:10	Fine	70.7	71.5	69.0	68	67	75
09/07/13	13:00	Fine	69.9	71.0	68.0	68	65	75
17/07/13	14:30	Cloudy	72.3	72.0	68.5	68	70	75
23/07/13	15:35	Cloudy	71.9	72.5	70.5	68	70	75

Location: M6 - HK Baptist Church Henrietta Secondary School

Date	Time	Weather	Measurement Noise Level			Baseline Level	Construction Noise Level	Limit Level
			Leq	L10	L90	Leq	Leq	Leq
Unit: dB(A), (30-min)								
03/07/13	13:55	Fine	73.0	74.0	71.0	71	69	70
09/07/13	13:45	Fine	74.9	76.0	72.5	71	73	70
16/07/13	15:50	Cloudy	74.4	75.0	72.5	71	72	70
23/07/13	14:20	Cloudy	73.5	75.0	72.0	71	70	70



Noise Monitoring Result

Day Time (0700 - 1900hrs on normal weekdays)

Location: M7e - International Finance Centre (Eastern End of Podium) (Reference Station)

Date	Time	Weather	Measurement Noise Level			Baseline Level	Construction Noise Level	Limit Level
			Leq	L10	L90	Leq	Leq	Leq
Unit: dB(A), (30-min)								
02/07/13	14:34	Fine	73.1	74.5	70.5	67	72	N/A
08/07/13	13:58	Fine	75.0	77.0	69.0	67	74	N/A
16/07/13	9:15	Fine	74.0	74.5	72.5	67	73	N/A
23/07/13	8:45	Fine	71.6	73.0	69.5	67	70	N/A

Location: M7w - International Finance Centre (Western End of Podium)

Date	Time	Weather	Measurement Noise Level			Baseline Level	Construction Noise Level	Limit Level
			Leq	L10	L90	Leq	Leq	Leq
Unit: dB(A), (30-min)								
02/07/13	13:58	Fine	66.5	67.5	64.0	69	67	75
08/07/13	14:38	Fine	65.6	67.0	63.0	69	66	75
16/07/13	9:47	Cloudy	66.8	68.0	65.5	69	67	75
23/07/13	9:30	Fine	67.2	68.5	65.5	69	67	75

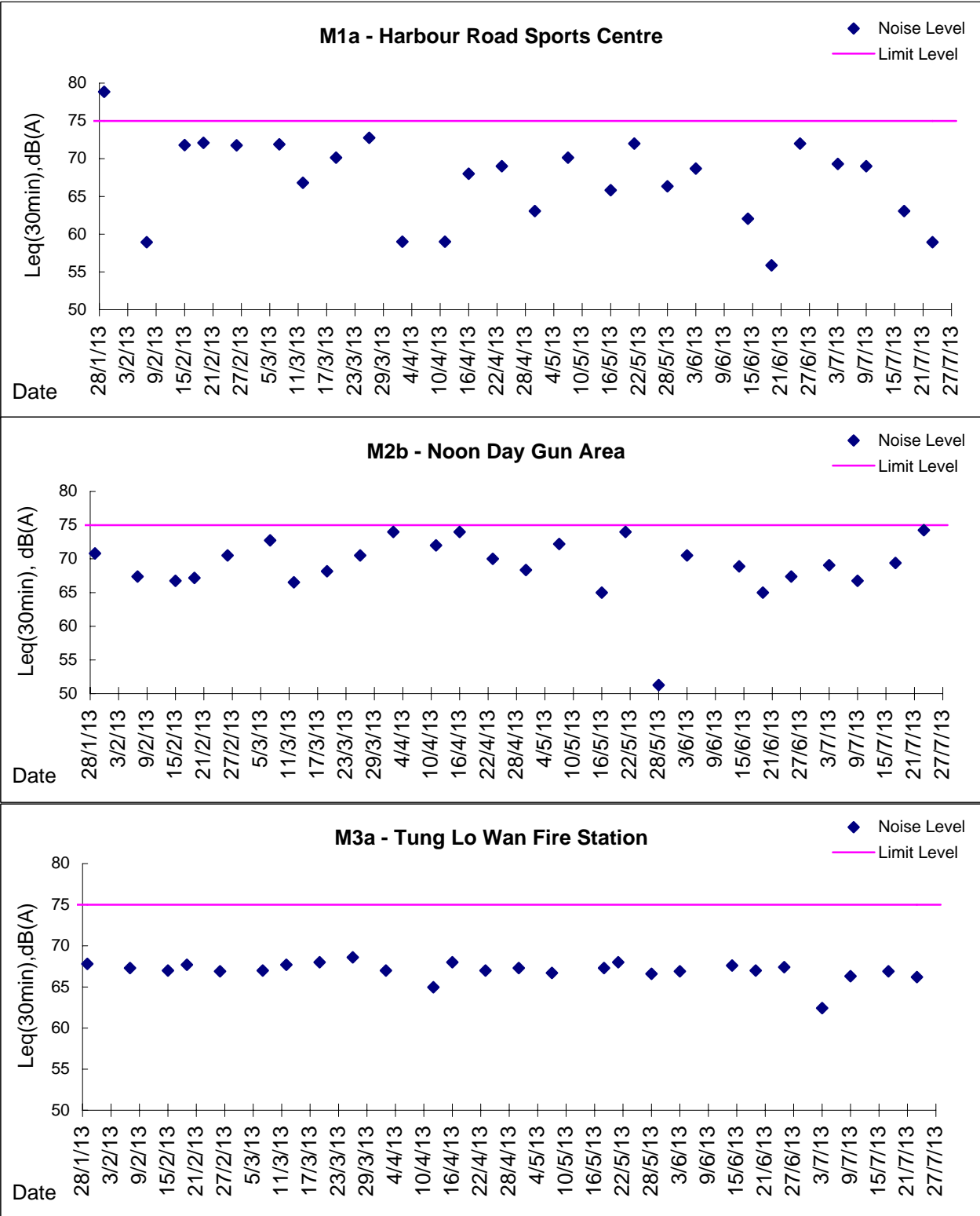
Location: M8 - City Hall

Date	Time	Weather	Measurement Noise Level			Baseline Level	Construction Noise Level	Limit Level
			Leq	L10	L90	Leq	Leq	Leq
Unit: dB(A), (30-min)								
02/07/13	15:29	Fine	59.4	62.0	56.0	64	59	70
08/07/13	15:28	Fine	60.4	62.0	57.0	64	60	70
16/07/13	11:00	Cloudy	62.8	65.0	57.5	64	63	70
23/07/13	10:15	Fine	60.3	63.0	57.0	64	60	70



Graphic Presentation of Noise Monitoring Result

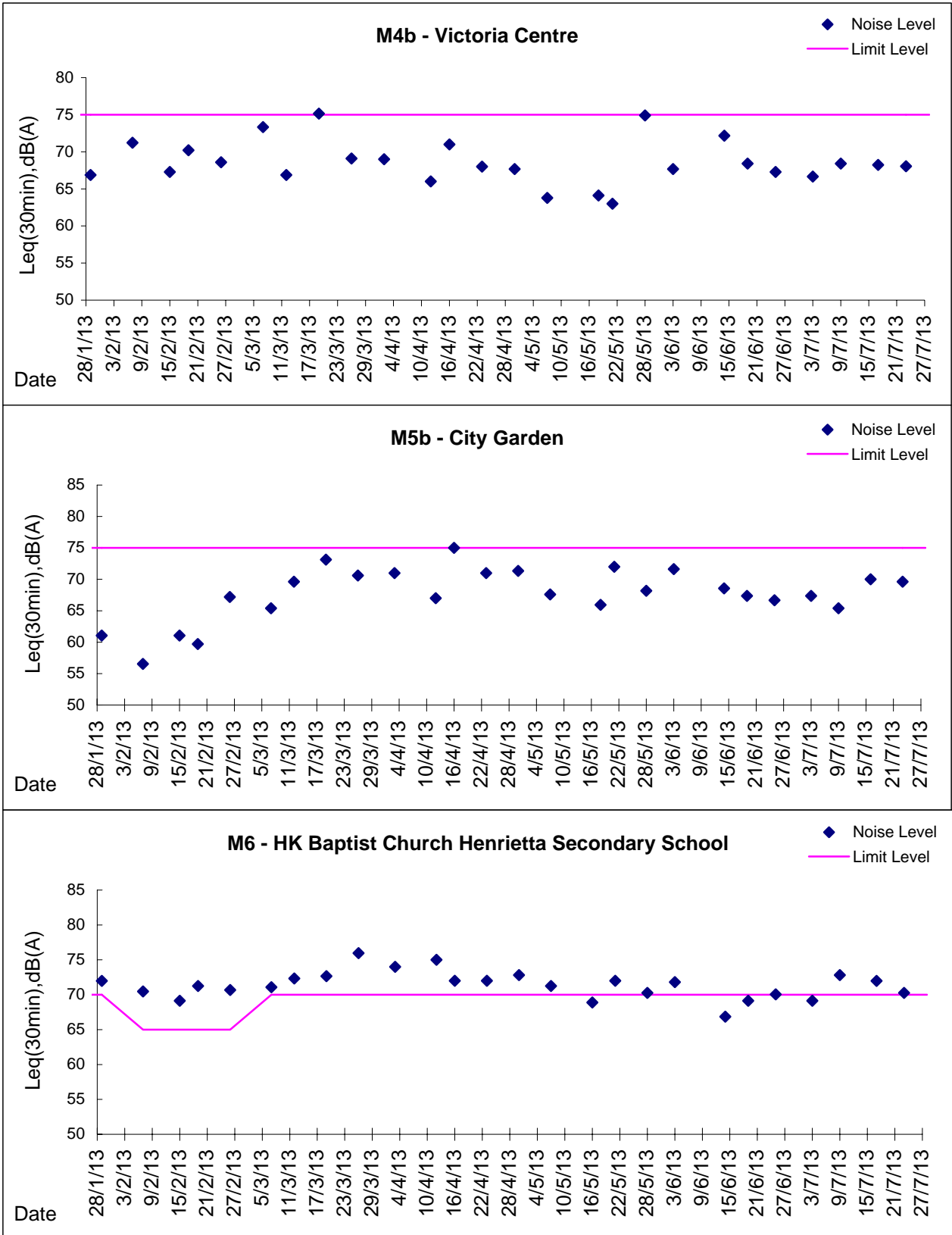
Day Time (0700 - 1900hrs on normal weekdays)





Graphic Presentation of Noise Monitoring Result

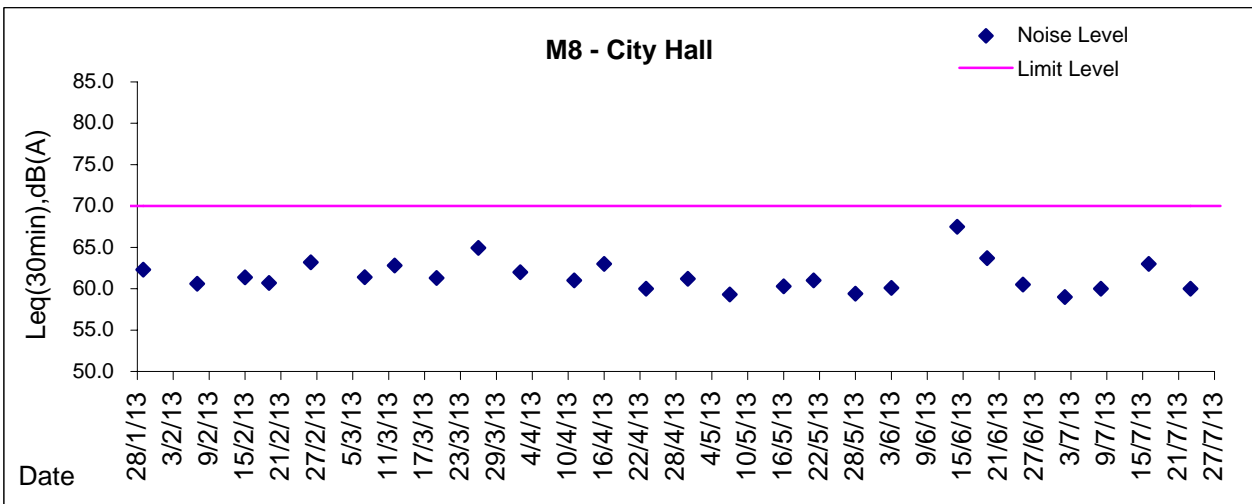
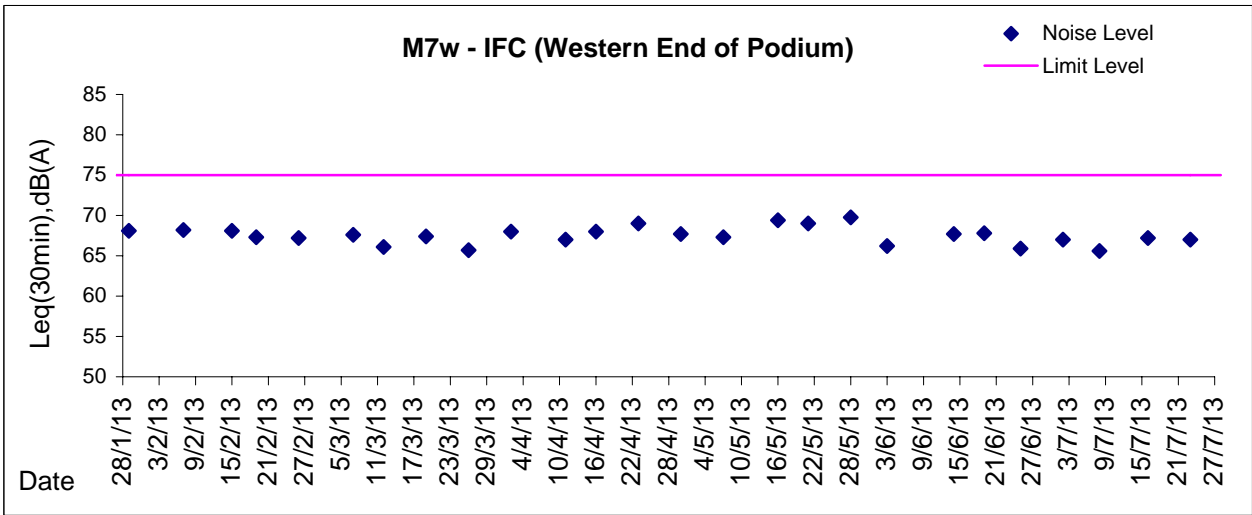
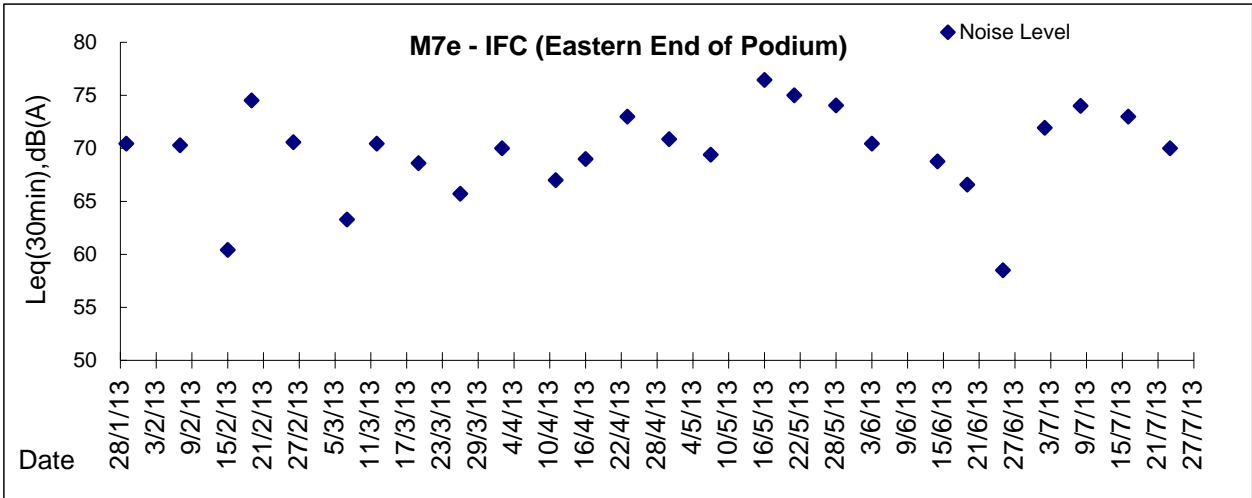
Day Time (0700 - 1900hrs on normal weekdays)





Graphic Presentation of Noise Monitoring Result

Day Time (0700 - 1900hrs on normal weekdays)



* Remark: M7e - IFC (Eastern End of Podium) is a reference monitoring station